

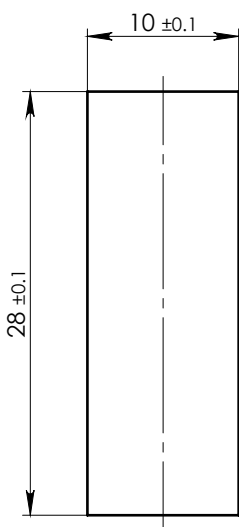
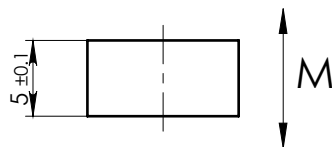
A

B

C

D

E




- NOTE:
1. Material: Grade - N35.
 2. Finish: Zn coated.
 3. Remove all sharp corners.

MAGNETIC CHARACTERISTICS:

		CGS	SI
Br	MIN	11.1 kG	1.11 T
	NOM	12.2 kG	1.22 T
bHc	MIN	11 kOe	876 kA/m
jHc	MIN	12 kOe	955 kA/m
BHmax	MIN	33 MGOe	263 kJ/m ³
	NOM	36.1 MGOe	287 kJ/m ³

Working Temperature 80° max.

ASSEMBLY		NAME			SHEET 1		OF 1	
DWG.NO NDBR028010BMD		MAGNET NDBR028010B			NAME	DATE	SIGNATURE	
	General Shape-and Position tolerance according DIN ISO 2768-mK		MATERIAL	NdFeB	DESIGNED	Igor	26/01/2014	
	Surface Finish $\sqrt{3.2}$		MASS	10.50(gr)	DRAWN	Igor	26/01/2014	
			SCALE	2:1	APPROVED	Rashid	26/01/2014	

F