

1

2

3

4

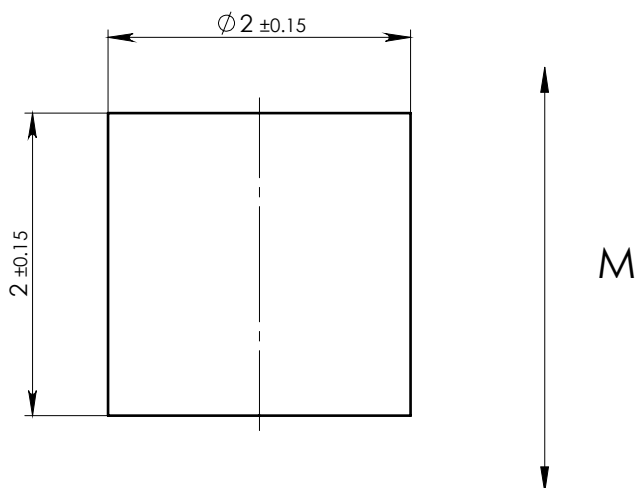
A

B

C

D

E





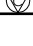
## NOTES:

1. Material: Grade: N35.
2. Finish: Ni coated, thickness  $15 \pm 5 \mu\text{m}$ .
3. Remove all sharp corners.
4. Parts shall be clean and free of all foreign matter.
5. Packing for shipment.

PART MUST COMPLIANCE WITH THE  
ROHS DIRECTIVE (2011/65/EU).

MAGNETIC CHARACTERISTICS:			
		CGS	SI
Br	MIN	11.7 kG	1.17 T
	MAX	12.2 kG	1.22 T
bHc	MIN	11.0 kOe	876 kA/m
jHc	MIN	12.0 kOe	955 kA/m
BHmax	MIN	33.0 MGOe	263 kJ/m <sup>3</sup>
	MAX	36.1 MGOe	287 kJ/m <sup>3</sup>

Working Temperature 80° max.

ASSEMBLY		NAME			SHEET 1		OF 1	
DWG.NO NDDR002002CMD		MAGNET NDDR002002C						
		Ref: NDDR002002CCD 02/01/2011						
		NAME		DATE		SIGNATURE		
	General Shape-and Position tolerance according DIN ISO 2768-mK		MATERIAL	NdFeB	DESIGNED	Igor	15/03/2018	
	Surface Finish: $\sqrt{3.2}$		MASS	0.05(gr)	DRAWN	Igor	15/03/2018	
	Control characteristics: - Important  - Critical 		SCALE	20:1	APPROVED	Rashid	15/03/2018	

F