

A

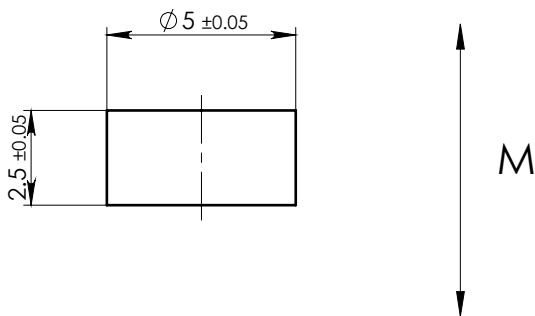
B

C

D

E

F





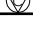
PART MUST COMPLIANCE WITH THE
ROHS DIRECTIVE (2011/65/EU).

MAGNETIC CHARACTERISTICS:			
		CGS	SI
Br	MIN	11.7 kG	1.17 T
	MAX	12.2 kG	1.22 T
bHc	MIN	11.0 kOe	876 kA/m
jHc	MIN	12.0 kOe	955 kA/m
BHmax	MIN	33.0 MGOe	263 kJ/m ³
	MAX	36.1 MGOe	287 kJ/m ³

Working Temperature 80° max.

NOTE:

1. Material: Grade - N35.
2. Finish: Ni coated.
3. Delivery magnetized.

ASSEMBLY		NAME			SHEET 1		OF 1	
DWG.NO NDDR005002EMD		MAGNET NDDR005002E			NAME		DATE	
		Ref: NDDR005002ECD26/09/*2017			SIGNATURE			
	General Shape-and Position tolerance according DIN ISO 2768-mK		MATERIAL	NdFeB	DESIGNED	Igor	02/12/2018	
	Surface Finish: $\sqrt{3.2}$		MASS	0.37(gr)	DRAWN	Igor	02/12/2018	
	Control characteristics: - Important  - Critical 		SCALE	5:1	APPROVED	Rashid	02/12/2018	