

1	2	3	4
REV.	DESCRIPTION		DATE
1	Changed note 2.		14/07/2016
			APPROVED Igor

A

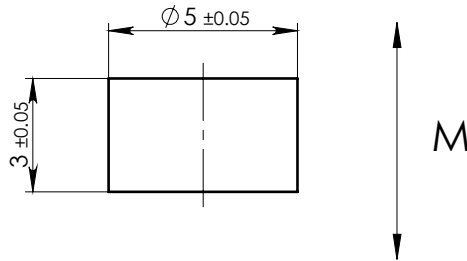
B

C

D

E

F



- NOTE:
1. Material: Grade -N35.
  2. Finish: NiCuNi coated.
  3. Remove all sharp corners.
  4. Delivery magnetized.

PART MUST COMPLIANCE WITH THE ROHS DIRECTIVE (2011/65/EU).

MAGNETIC CHARACTERISTICS:			
		CGS	SI
Br	MIN	11.7 kG	1.17 T
	MAX	12.2 kG	1.22 T
bHc	MIN	11.0 kOe	876 kA/m
jHc	MIN	12.0 kOe	955 kA/m
BHmax	MIN	33.0 MGOe	263 kJ/m <sup>3</sup>
	MAX	36.1 MGOe	287 kJ/m <sup>3</sup>

Working Temperature 80° max.

ASSEMBLY		NAME			SHEET 1		OF 1	
DWG.NO NDDR005003DMD		MAGNET NDDR005003D						
		Ref: NDDR005003DCD 12/07/2016						
					NAME		DATE	
					SIGNATURE			
	General Shape-and Position tolerance according DIN ISO 2768-mK		MATERIAL	NdFeB	DESIGNED	Igor	12/07/2016	
	Surface Finish: $\sqrt{3.2}$		MASS	0.44(gr)	DRAWN	Igor	12/07/2016	
	Control characteristics: - Important - Critical		SCALE	5:1	APPROVED	Rashid	12/07/2016	