

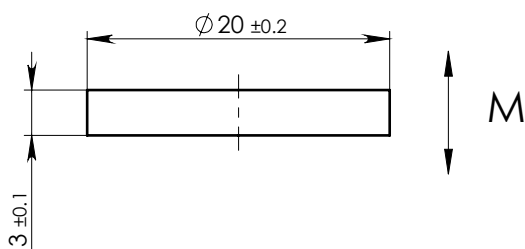
A

B

C

D

E




NOTE:

1. Material: Grade - N35.
2. Remove all sharp corners.
3. Finish: Zn coated.

MAGNETIC CHARACTERISTICS:

		CGS	SI
Br	MIN	11.7 kG	1.17 T
	MAX	12.2 kG	1.22 T
bHc	MIN	11.0 kOe	876 kA/m
jHc	MIN	12.0 kOe	955 kA/m
BHmax	MIN	33.0 MGOe	263 kJ/m ³
	MAX	36.1 MGOe	287 kJ/m ³

Working Temperature 80° max.

ASSEMBLY		NAME			SHEET 1		OF 1	
DWG.NO NDDR020003AMD		MAGNET NDDR020003A			NAME		DATE	
		General Shape-and Position tolerance according DIN ISO 2768-mK			DESIGNED		12/11/2014	
		Surface Finish: $\sqrt{3.2}$			DRAWN		12/11/2014	
		Control characteristics: - Important - Critical			APPROVED		12/11/2014	
		MATERIAL		DESIGNED				
		NdFeB		Igor				
		MASS		DRAWN				
		7.16(gr)		Igor				
		SCALE		APPROVED				
		2:1		Rashid				

F