

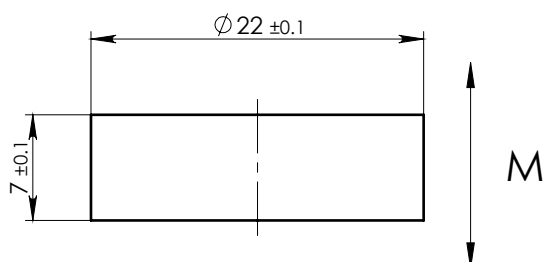
A

B

C

D

E





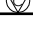
## NOTE:

1. Material: Grade - N40.
2. Finish: Zn coated.
3. Delivery magnetized.

PART MUST COMPLIANCE WITH THE  
ROHS DIRECTIVE (2011/65/EU).

MAGNETIC CHARACTERISTICS:			
		CGS	SI
Br	MIN	12.5 kG	1.25 T
	MAX	12.9 kG	1.29 T
bHc	MIN	11.0 kOe	876 kA/m
jHc	MIN	12.0 kOe	955 kA/m
BHmax	MIN	37.9 MGOe	302 kJ/m <sup>3</sup>
	MAX	41 MGOe	326 kJ/m <sup>3</sup>

Working Temperature 80° max.

ASSEMBLY		NAME			SHEET 1		OF 1	
DWG.NO					NAME	DATE	SIGNATURE	
NDDR022007AMD		MAGNET NDDR022007A			Igor	07/12/2016		
	General Shape-and Position tolerance according DIN ISO 2768-mK		MATERIAL	NdFeB	DESIGNED	Igor	07/12/2016	
	Surface Finish: $\sqrt{3.2}$		MASS	19.96(gr)	DRAWN	Igor	07/12/2016	
	Control characteristics: - Important  - Critical 		SCALE	2:1	APPROVED	Rashid	07/12/2016	

F